

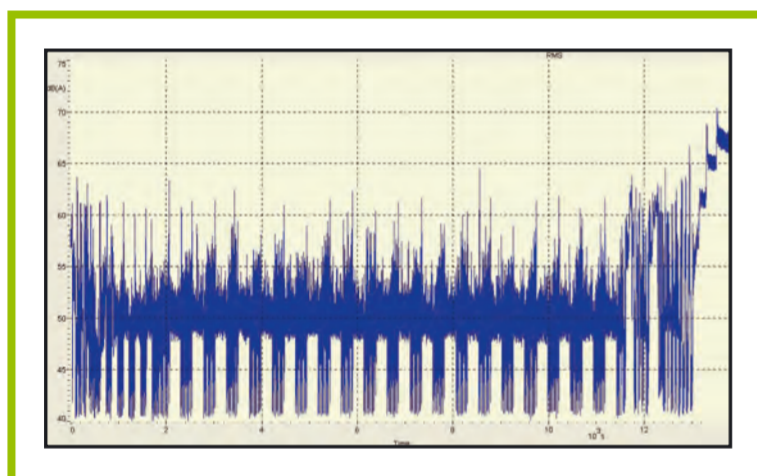
Acoustic anechoic room

Technical data

- sound-absorbing lining of the walls with acoustic transparent cover (G+H Asonad MF) with a depth of 0.85 m
- usable open area for class I (L x W x H) 4.2 m x 2.8 m x 1.9 m
- lower limit frequency ($a \geq 0.99$; according to ISO 3745 class 1): 100 Hz
- ventilating system noise level: < 10 dB(A)
- vibration-isolated room-in-room construction with a lower limiting frequency of < 15 Hz

Applications

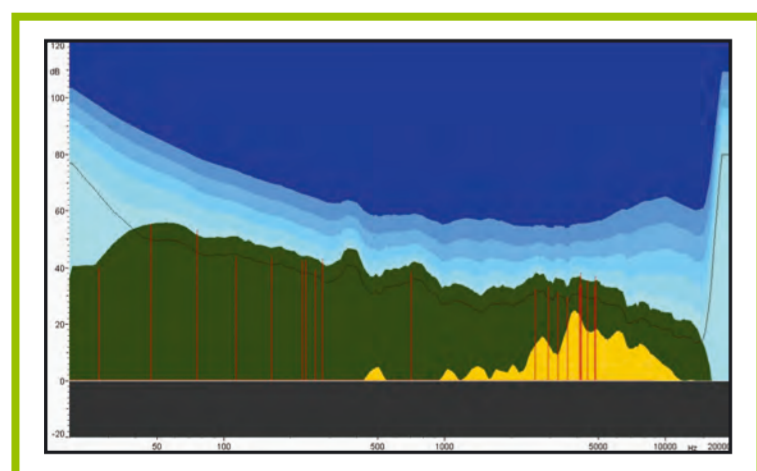
- determination of the sound power level, e.g. of household devices, according to standard specifications
- further analyses of sound emission, sound intensity and sound source detection according to customer requirements



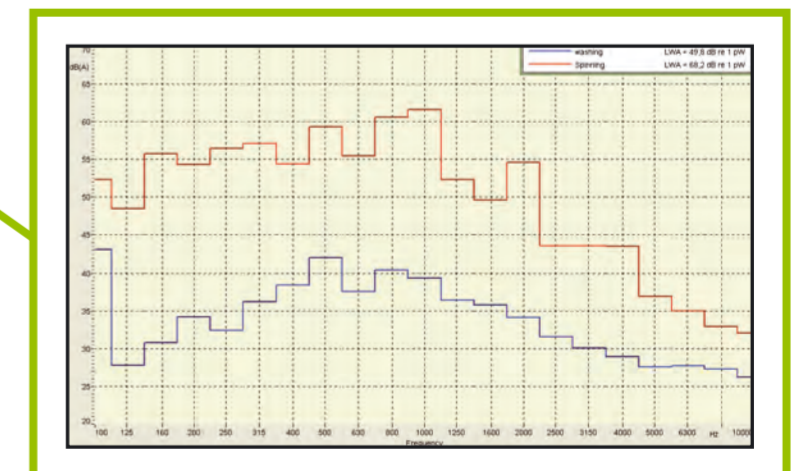
level-time course of a washing machine



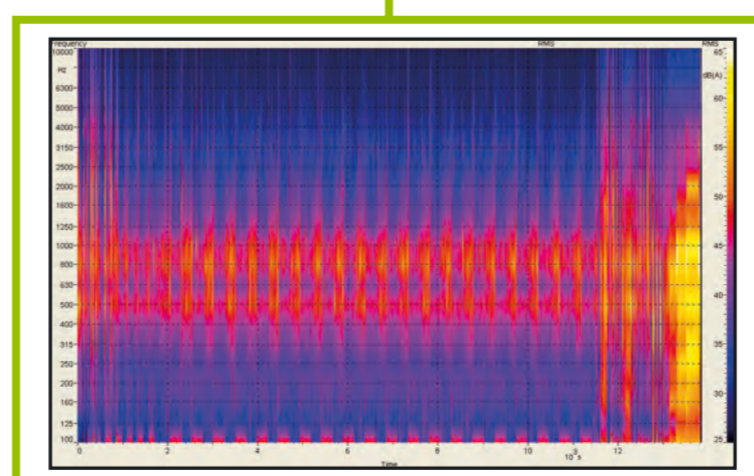
FFT of a washing machine



signal of a heat pump condenser dryer converted in its spectral components



third octave band analysis of a washing machine



spectrogram of a washing machine

SLG Prüf- und Zertifizierungs GmbH

Burgstädter Straße 20
09232 Hartmannsdorf
Germany

Please, contact: Erik Schädlich
Tel.: +49 (0) 3722 / 73 23 750
E-Mail: e.schaedlich@slg.de.com

René Andreis
Tel.: +49 (0) 3722 / 73 23 807
E-Mail: r.andreis@slg.de.com

www.slg.de.com