

LFGB

WEEE

German-Battery Act

REACH

ProdSG

RoHS

Pop-Regulation



SLG Prüf- und Zertifizierungs GmbH

Chemical analytics

We check consumer products for chemical safety

Legal foundations

Our tests are primarily based on the following laws, regulations and directives:

- > REACH/German Chemicals Prohibition Ordinance
- > RoHS/WEEE
- > German Food and Feed Act (LFGB)
- > German Product Safety Act (ProdSG)
- > EU Toy Safety Directive and standard series EN 71
- > German Battery Act
- > German Packaging Ordinance
- > PoP Regulation

Contact

SLG Prüf- und Zertifizierungs GmbH
Burgstädter Straße 20
09232 Hartmannsdorf
Germany

Do you have any questions?

Phone: +49 3722 7323-795

Fax: +49 3722 7323-899

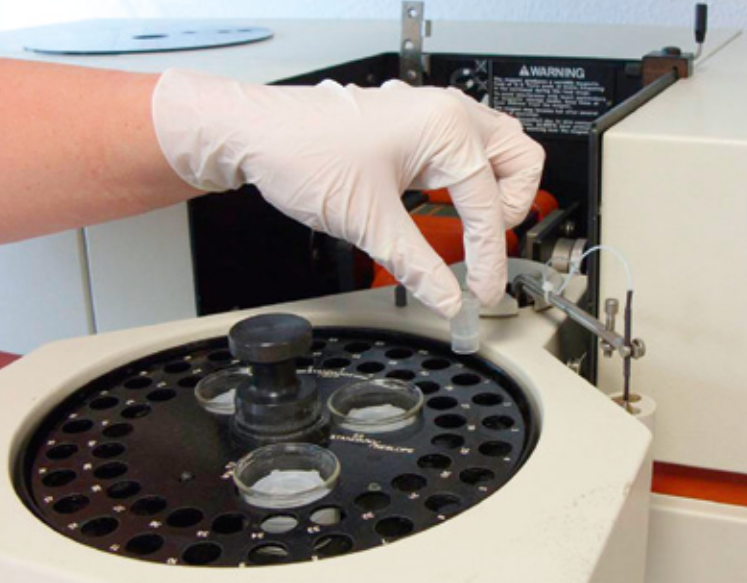
E-mail: chemie@slg.de

Please, visit our website at www.slg.de for more information on our services.



Our laboratory for chemical analytics is accredited by DAKKS.





Chemical analytics

Chemicals are used in consumer goods to enhance useful properties. We test different kinds of products from electric tools and kitchen appliances to toys and decoration articles in order to make sure that limit values for harmful substances regulated by law and other critical chemicals at the focus of consumer protection are not exceeded.

Our services

- › analysis of electric devices for banned substances according to RoHS
- › chemical analytics of toys
- › analysis of commodities with food contact according to the German LFGB
- › determination of heavy metal contents in all materials
- › organic trace analysis in relevant parts (PAH, phthalates, etc.)
- › determination of formaldehyde in different materials
- › analysis of textiles
- › custom-tailored test plans

Product groups we test

- › garden articles, leisure and sports equipment
- › commodities with food contact
- › household appliances
- › lights and lamps
- › toys and children's articles
- › tools and workshop articles
- › textiles and leather
- › packaging materials and decoration articles

Your product was not in the list? Call us!



Show your customers that your product complies with all relevant limit values for harmful substances regulated by law and other critical chemicals at the focus of consumer protection.

Possible test parameters

- › banned substances according to RoHS
- › polycyclic aromatic hydrocarbons (PAH)
- › phthalates
- › nonylphenol
- › toxic heavy metals, e.g. lead, cadmium, chrome VI and mercury
- › azodyes, arylamines
- › chlorofluorocarbons, lightly volatile halogenated hydrocarbons (CFC, LVHH)
- › volatile organic compounds (VOC)
- › formaldehyde
- › wood preservatives, e.g. pentachlorophenol
- › tin-organic compounds
- › total migration, specific migration

Just present us your product. We draw up a custom-tailored test plan for an analysis of the relevant parameters.